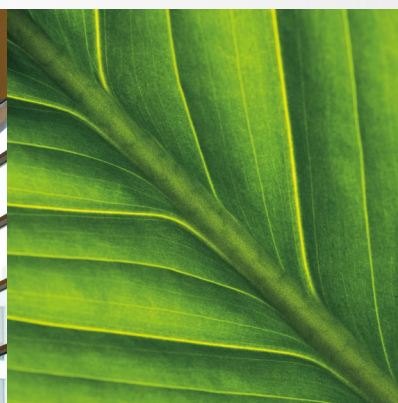
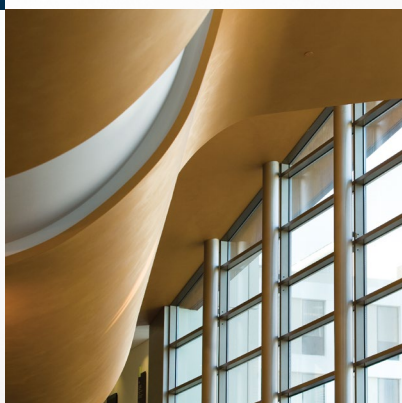




HP DESIGNJET

# IMPACT

BUSINESS | CLIENTS | COMMUNITY





# Making a Major Impact

“

When customers want quality, and they need it quick, the HP DesignJet Z6 PostScript® series is effectively a license to print money.

”

*Julie Belanger, Founder and Vice President, The 111th Group*



“

The HP DesignJet T830 36-in Multifunction Printer produces high-quality, large-format prints at speed and offers a wide range of extra features. We can easily wheel it around the office and the Android app makes choosing, editing, and printing files so easy—from any location.

”

*Neil Geraghty, Surveyor, Duke Construction*

Thanks to you, visions are fulfilled and brands are brought to life around the globe. You've helped us become one of the world's best-known names in printing. And now, we're empowering you to take things even further. Discover the impact of HP DesignJet large-format printers.

“ Thanks to this HP DesignJet printer, we are able to print four times faster, reaching an equivalent or even higher quality than in the past, and at a lower printing cost.

”

*Oscar Farrell, Head of Marketing,  
Grupo AP Photo*



“ One of the biggest benefits of the HP DesignJet Z-series is its embedded spectrophotometer, which monitors color accuracy so we get consistency.

”

*Mark Kadonoff, Owner/CEO, RPG Square  
Foot Solutions*



# 29 years ago, the HP DesignJet was born...



## 1970s & 1980s

HP small- and large-format **pen plotters** set the reference. A few years later, HP invents **Thermal Inkjet technology**, transforming the entire office printing experience



## 1990s

**HP DesignJet printers** are launched—fast, affordable, high-quality, monochrome and color printing transforms the way architects and engineers work



## 2000s

HP innovation continues with **pigment-based inks** delivering exceptional large-format photo quality for GIS and rendering



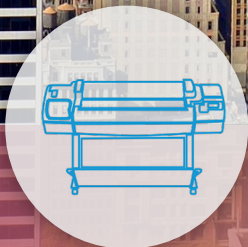
This led to a lifelong partnership with architects, designers, and creators, that continues to this day.

---



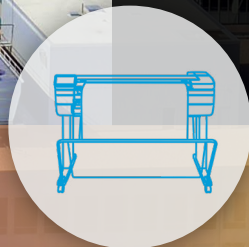
2019

Today the innovation continues with the **HP DesignJet XL series**, providing extreme reliability in the most immediate, robust, compact, and secure MFP.<sup>2</sup>



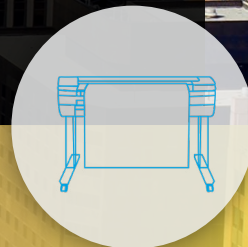
2010s

HP launches the first **web-connected and multifunction large-format printers**



2015

HP reinvents large-format printing with the **HP DesignJet T830 Multifunction Printer**, a robust, compact, Wi-Fi ready MFP with a built-in scanner at an unbeatable price<sup>1</sup>



2018

HP expands its proven HP DesignJet Z- series portfolio, reinforcing focus on high-impact graphics with **HP DesignJet Z9<sup>®</sup>/Z6 PostScript<sup>®</sup> Printers**



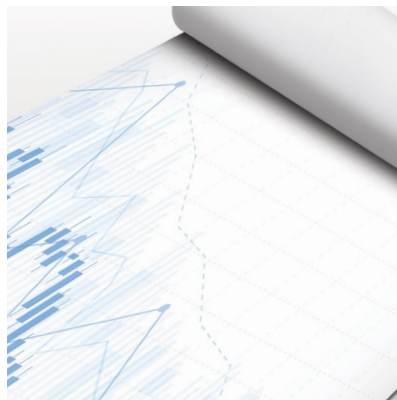
One Portfolio.  
Impact for Every Industry.





You and your clients have exacting standards. The HP DesignJet portfolio of printers, as well as our software, inks, and printing materials are designed to meet and exceed them. Our HP DesignJet XL, Z-series, and T-series printers deliver the image quality, accuracy, speed, security and color necessary to satisfy even the most demanding clients, while keeping costs low and helping you win new and repeat business.





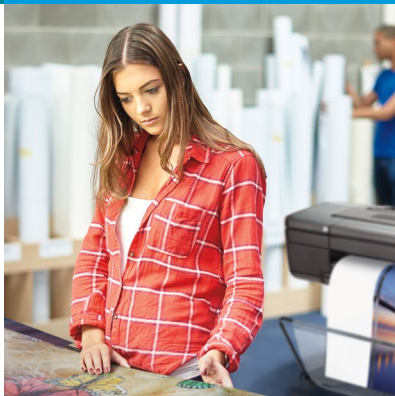
### General In-office and Large-format Printing

Take on technical, graphics, or other applications with HP DesignJet printers that provide terrific ease-of-use and flexibility. Print different document types and sizes.



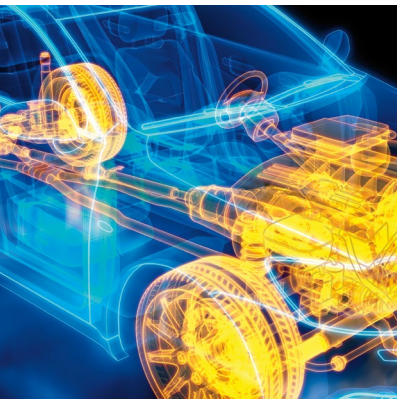
### Geographic Information Systems, Exploration, Utilities, and Land Management

Print, copy, and scan drawings, satellite and aerial photos, maps, and more that communicate clearly with excellent image and line quality.



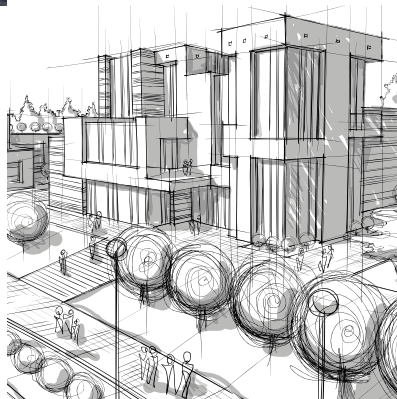
### Reprographic and Graphics Print Service Providers

With HP DesignJet, reprographic houses can print, scan, and copy accurate and low-cost monochrome and color plans, plan sets, and renderings. You can quickly print posters, color proofs, POP displays, event signage, and more.



### Manufacturing, Automotive, and Transportation

Print big, so even the smallest details get noticed. Produce large-format plans, drawings, renderings, and more—easily, quickly, and with vibrant quality.



### Architecture, Engineering, and Construction

Print large-format drawings, schematics, renderings, and presentations with great ease, speed, and quality. HP DesignJet printers and MFPs can help build and grow your business.



### Temporary Retail POP and POS

Tailor your message to customers in stores with information, product displays, and sales offers delivered on demand. For signage with impact, choose large-format HP DesignJet printers.





### Digital and Fine Art, and Graphic Design

Show off your digital design with large-format prints and presentations. Produce fine art prints and reproductions that demonstrate strict color accuracy and high quality.



### Education

Encourage learning with large-format signs used for teaching, everyday communications, and more. HP DesignJet printers can help students make the grade.



### Photography

Bring your vision to life with large-format photographs. HP DesignJet printers enable you to share and promote your work with professional photo quality and accuracy that are true to your vision.



### High-quality POP and Exhibition Indoor Signage

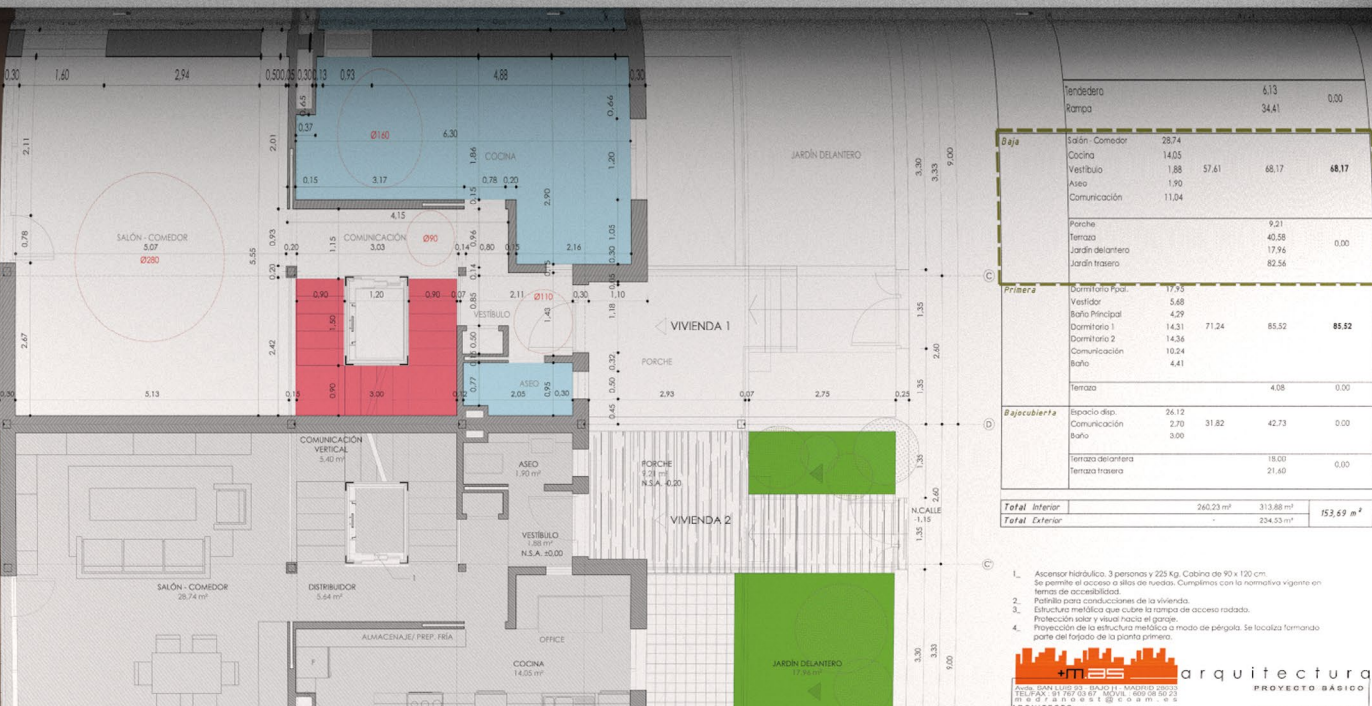
Create high-impact signage that lasts with HP DesignJet printers. Show off your brand with large-format prints that demonstrate superb quality along with durability and lasting results — and make a big impression.



### Copy Shops and Quick Printers

Print more of the documents your customers want with HP large-format printers that are easy, flexible, fast, and cost effective. Take on a wide variety of jobs and deliver stunning results.

# Impactful Solutions, Accessories, and Services



ARTE. ZONA UPL3A



## You

want to optimize your workflow. This means accomplishing more while saving money, managing your entire fleet (including non-HP large-format printers), and boosting productivity.

## We

have created advanced software solutions and applications that work with HP DesignJet printers to do exactly what you want.



## Job Creation



### HP Applications Center<sup>3</sup>

A powerful solution for managing your orders with easy content creation and job submission. Bring in new customers with an easy design experience that's also easily integrated into your website.

Learn more at [hpaapplicationscenter.com](http://hpaapplicationscenter.com)

## Job Submission



### HP Click Printing Software

Print with just one click,<sup>4</sup> and optimize media usage and costs.

Learn more at [hp.com/go/clickdesignjet](http://hp.com/go/clickdesignjet)



### HP DesignJet Universal Print Driver (UPD)

Provide IT teams with greater control and effectiveness. This single driver solution simplifies printer deployment and management, saving time and freeing IT to focus on innovation.

Learn more at [hp.com/go/designjetupd](http://hp.com/go/designjetupd)



### HP SmartStream Software

Make your large-format production workflow twice as efficient.<sup>5</sup>

Learn more at [hp.com/go/smartstreamdesignjet](http://hp.com/go/smartstreamdesignjet)



### HP Mobile Printing

An easy way to print, scan, and share with your smartphone or tablet with our app HP Smart app.

Learn more at [hp.com/go/designjetmobility](http://hp.com/go/designjetmobility)

## Fleet Management



### HP Embedded Web Server

Enables you to view printer status information, change settings, and manage a limited number of printers at your computer.



### HP Web Jetadmin

A web-based print management tool for businesses with more than 15 printers. Lets IT administrators install, configure, monitor, troubleshoot, and manage fleets.

Learn more at [hp.com/go/wja](http://hp.com/go/wja)



### HP PrintOS

Get more out of your HP DesignJet printers, simplify and automate your print production processes, and collaborate in new ways to grow your business.

Learn more at [www.hp.com/go/printos](http://www.hp.com/go/printos)



## Original HP Inks

Engineered to work as an optimized system with HP DesignJet printers to provide outstanding results and reliable, trouble-free performance. The result? Less downtime and lower printing costs. Use Original HP Inks to maximize printhead life and ensure full HP warranty protection.

Learn more at [hp.com/go/originalhpink](http://hp.com/go/originalhpink)

### HP Vivid Photo Inks

Formulated to excel on photo, coated, and digital fine art papers, vibrant and durable HP pigment-based inks are designed exclusively for HP DesignJet Z-series printers.

### HP Bright Office Inks

Formulated to excel on plain papers, these fast-drying inks are a blend of HP dye-based color inks and HP pigment-based black ink exclusively for use in HP DesignJet T-series printers.

## HP Large-format Printing Materials

These materials provide consistently outstanding image quality and, with a wide range to choose from, you'll always find the right printing material for the job, or for almost any application. HP Premium printing materials are designed to provide best-in-class performance on key attributes like display permanence. For lower cost options, consider HP Everyday or HP Universal printing materials.

Learn more at [HPLFMedia.com](http://HPLFMedia.com)



## HP DesignJet Support Services

### Installation Service with Network Setup

Onsite installation and network setup of your HP DesignJet printer by an HP-authorized service technician.

### Next Business Day Onsite Repair

Extend your HP warranty for two, three, four, and five years. An HP-authorized service technician typically arrives the next business day. Includes parts, material, and labor.

### Post-warranty Services

Provides continued protection after your standard HP warranty or HP Care Pack Service expires. Offered in one- and two-year increments.

Learn more about HP DesignJet Support Services at [hp.com/go/designjetsupport](http://hp.com/go/designjetsupport)



EXPERIENCE THE  
NEW STANDARD OF  
RELIABILITY

Designed to deliver. Built to last.



HP DesignJet XL 3600 MFP



## Specifications to Help You Choose



### HP DesignJet XL 3600 Multifunction Printer series

Printer size/paper size	914 mm (36 inch)/A0	
Scan and copy functions	Yes	
PostScript® version available	Yes. Including post-editing features	
Print speed (line drawings)	20 sec/page on A1, 180 A1/D prints/hour	
Scan speed	Color: up to 7.62 cm/sec, (3 in/sec). Greyscale: up to 25.4 cm/sec (10 in/sec)	
Print languages (standard)	HP-GL/2, HP-RTL, TIFF, JPEG, CALS G4; Non-PostScript Printer: HP-GL/2, HP-RTL, TIFF, JPEG, CALS G4	
Additional print languages PostScript® SKU/PostScript® upgrade (optional)	PostScript® multifunction printer: Adobe PostScript® 3, Adobe PDF 1.7 Extension Level 3, HP-GL/2, HP-RTL, TIFF, JPEG, CALS G4, URF	
Scan formats (standard)	JPEG, TIFF	
Additional scan formats PostScript® upgrade (optional)	PDF, PDF/A for archiving Multi-page PDF	
Ink cartridges capacity	300-ml Original HP Ink cartridges	
Inks	HP Bright Office Inks	
Number of rolls/maximum roll length	Two automatic front-loading roll feeds; rolls up to 650ft (200m) long	
Compatible media core size	3 in default; 2 in optional	
Cut sheet support	Yes	
Media handling: output, capacity	Integrated output stacker, up to 100 A1/D-size capacity and integrated media bin	
Memory	128 GB (file processing), based on 8 GB RAM	
Interfaces (standard)	Gigabit Ethernet (1000Base-T)	
PIN printing	Yes	
Mobile printing	Email printing	Yes
	In-OS printing	Yes
	HP Smart App	Yes
Job accounting functionality	Yes	
Manage print queues	Yes	
HP Software solutions	Yes. HP SmartStream, HP Click Printing software, HP SmartTracker	
HP DesignJet Partner Link Alert Service	Yes	
Security	Device	HP Secure Boot, whitelisting, TPM, LDAP and Kerberos authentication, Role Based Access Control, Front Panel Access Lock, Security event logging, Disable network ports and protocols, SIEM integration, SNMPv3
	Data	802.1x compatibility, IPsec, TLS/SSL, self-encrypted HD, embedded FIPS 140 (for US only), Secure File Erase, Secure Disk Erase, NTLM v2
	Document	Integrated pull-printing solution with Celiveo, Encrypted PIN Printing, PIN printing

# HP DesignJet Z-series





## High-impact Quality

Our Z-series printers are perfect for digital print service providers, professional photographers, retail, graphic designers, and geographic information system (GIS) firms—those who expect to create professional photo quality prints with great consistency and precision. To find the right HP DesignJet Z-series printer for you, take a look at the impressive facts and figures on the next page.



## Specifications to Help You Choose

HP DesignJet Z9+  
PostScript® Printer Series

Printer size/paper size	610 mm (24 inch) 1118 mm (44 inch)
Product description	Professional photo-quality prints, fast and simple
Customer type	Photo labs, photo finishers, designers, print service providers
Ink cartridges	9 inks: C, M, Y, mK, pK, G, CR, CG, CB (GE - optional)
Inks	HP Vivid Photo Inks
Applications	Photos, canvas, backlits, POP graphics/displays, posters, banners, maps, and orthophotos with professional photographic quality
Media handling - input	Two automatic roll feeds and smart roll-switching (on Z9*dr model), roll feed, sheet feed
Media handling - output	Media bin, automatic horizontal cutter (cuts all HP Z-series printer qualified media including most canvas), vertical trimmer (on Z9*dr model), optional take-up reel on 44-in models
Print resolution	Up to 2400 x 1200 optimized dpi
Maximum print speed	24-in model: 56 sqm <sup>2</sup> /hr (600 sqft <sup>2</sup> /hr) 44-in model: 74 sqm <sup>2</sup> /hr (795 sqft <sup>2</sup> /hr)
Embedded Adobe PostScript®/PDF	Yes
HP Professional PANTONE® Color Emulation	Yes
HP Click printing software	Yes
Virtual Memory & HDD capacity	Virtual memory: 128 GB (based on 4 GB RAM) Self-encrypted HDD capacity: 500 GB
HP Embedded spectrophotometer	Yes
Ability to print without RIP	Yes
Security	Device
	HP Secure Boot, whitelisting, signed firmware upgrade, Role Based Access Control, front panel access lock, disable protocols, SNMPv3
	Data
	IPSec compatibility, TLS/SSL, IPv4 & IPv6 compatibility, CA/JD certificates, 802.1x compatibility, Self-encrypted HDD, secure file and disk erase
	Document
	PIN printing, compatible with the Integrated Célivéo Enterprise Solution for pull-printing
	Fleet security management
	HP Web JetAdmin, HP JetAdvantage Security Manager



## HP DesignJet Z-series: High-impact Quality



HP DesignJet Z6  
PostScript® Printer Series



HP DesignJet Z6810  
Production Printer Series



HP DesignJet Z6610  
Production Printer

610 mm (24 inch) 1118 mm (44 inch)	1067 mm (42 inch) 1524 mm (60 inch)	1524 mm (60 inch)
High-definition print quality, fast and secure	The fastest high-quality production printing solution <sup>6</sup>	The fastest graphics production printing solution <sup>9</sup>
GIS map creators/users, print service providers, and retailers for both graphics and technical applications	Copy shops, print service providers, photo labs, photo finishers, and GIS	Copy shops, print service providers, GIS, retail
6 inks: C, M, Y, mK, pK, CR	8 inks: LC, M, Y, mK, pK, LG, LM, CR	6 inks: C, M, Y, mK, pK, LG
HP Vivid Photo Inks	HP Vivid Photo Inks	HP Vivid Photo Inks
Maps and technical drawings, POP graphics/displays, posters and banners	Posters, banners, mockups, photos, digital fine art, proofs, displays, POP/POS, light boxes – film, exhibition, event graphics	Maps, posters, banners, mockups, photos, digital fine art, banners, exhibition, event graphics, light boxes – film, point of sale/display
Two automatic roll feeds and smart roll-switching (on Z6dr model), roll feed, sheet feed	Roll feed	Roll feed
Media bin, automatic horizontal cutter (cuts all HP Z-series printer qualified media including most canvas), vertical trimmer (on Z6dr model), optional take-up reel on 44-in models	Automatic horizontal cutter, take-up reel (reel not included with 42-in model)	Automatic horizontal cutter, take-up reel
Up to 2400 x 1200 optimized dpi	Up to 2400 x 1200 optimized dpi	Up to 2400 x 1200 optimized dpi
24-in model: 67 sqm <sup>2</sup> /hr (720 sqft <sup>2</sup> /hr) 44-in model: 85 sqm <sup>2</sup> /hr (916 sqft <sup>2</sup> /hr)	42-in model: 113.6 m <sup>2</sup> /hr (1225 ft <sup>2</sup> /hr) 60-in model: 140 m <sup>2</sup> /hr (1500 ft <sup>2</sup> /hr)	140 sqm <sup>2</sup> /hr (1500 sqft/hr)
Yes	Optional	Optional
Yes	Available with PostScript®/PDF upgrade Kit	Available with PostScript®/PDF upgrade Kit
Yes	Yes	Yes
Virtual memory: 128 GB (based on 4 GB RAM) Self-encrypted HDD capacity: 500 GB	Virtual memory: 64 GB (based on 1 GB RAM) HDD capacity: 500 GB	Virtual memory: 64 GB (based on 1 GB RAM) HDD capacity: 500 GB
No	Yes	No
Yes	Yes	Yes
HP Secure Boot, whitelisting, signed firmware upgrade, Role Based Access Control, front panel access lock, disable protocols, SNMPv3	Control Panel Access Lock, disable protocols	Control Panel Access Lock, disable protocols
SNMPv3 compatibility, IPSec compatibility, TLS/SSL, IPv4 & IPv6 compatibility, CA/JD certificates, 802.1x compatibility, Self-encrypted HDD, secure file and disk erase	SNMPv3 compatibility, IPSec, secure disk, file erase, certificates management, and SSL	SNMPv3 compatibility, IPSec, secure disk, file erase, certificates management, and SSL
PIN Printing, compatible with the Integrated Célivéo Enterprise Solution for pull-printing	No	No
HP Web JetAdmin, HP JetAdvantage Security Manager	HP Web JetAdmin, HP JetAdvantage Security Manager	HP Web JetAdmin, HP JetAdvantage Security Manager

# HP DesignJet T-series





## High-impact Accuracy

These printers are ideal for architectural, engineering, and construction companies (AEC) and geographic information system (GIS) firms. Also, MCAD professional users and workgroups and government agencies. If you need to print, scan, or copy maps, technical drawings, or renderings with precise, accurate line quality and crisp text, be sure to review the specifications on the following pages.



## Specifications to Help You Choose



### HP DesignJet T2600 Multifunction Printer Series

Printer size/paper size	914 mm (36 inch)/A0
Scan and copy functions	Yes
PostScript® /PDF version available	Yes
Print speed (PostScript® /PDF)	20 sec/page on A1, 180 A1 prints/hour
Scan speed	Color: up to 6.35 cm/sec, (2.5 in/sec). Grayscale: up to 19.05 cm/sec (7.5 in/sec) Scan: Up to 3 in/sec (color, 200 dpi), up to 10 in/sec (grayscale, 200 dpi); Scan: Up to 7.62 cm/sec (color, 200 dpi), up to 25.4 cm/sec (grayscale, 200 dpi);
Print languages (standard)	Basic multifunction printer: HP-GL/2, HP-RTL, TIFF, JPEG, CALS G4, URF
Additional print languages PostScript® SKU/ PostScript® upgrade (optional)	PostScript® multifunction printer: Adobe PostScript® 3, Adobe PDF 1.7 Extension Level 3, HP-GL/2, HP-RTL, TIFF, JPEG, CALS G4, URF
Scan formats (standard)	TIFF, JPEG, Multipage TIFF
Additional scan formats PostScript® upgrade (optional)	PDF, PDF/A, Multipage PDF
Ink cartridges capacity	130- and 300-ml Original HP Ink cartridges
Inks	HP Bright Office Inks
Number of rolls/maximum roll length	T2600dr: Two automatic front-loading roll feeds; rolls up to 91.4-m (300-ft) long T2600: One automatic front-loading roll feed; rolls up to 91.4-m (300-ft) long
Compatible media core size	2 inch; 3 inch only with optional accessory
Cut sheet support	Yes
Media handling: output, capacity	Integrated output stacker, up to 100 A1/D-size capacity and integrated media bin
Memory	500GB Self-Encrypted HDD with a memory of 128GB for job processing based on 8 GB of RAM
Interfaces (standard)	Gigabit Ethernet (1000Base-T), Hi-Speed USB 2.0 certified host connector
PIN printing	Yes
Mobile printing	Email printing
	In-OS printing
	HP Smart App
	Remote Printing
Job accounting functionality	Yes
Manage print queues	Yes
HP SmartStream for HP DesignJet printers	No
HP DesignJet Partner Link Alert Service	Yes
Security	Device
	Data
	Document

HP Secure Boot, whitelisting, TPM, LDAP and Kerberos authentication, Role Based Access Control, Front Panel Access Lock, Security event logging, Disable network ports and protocols, SIEM integration, SNMPv3

802.1x compatibility, IPSec, TLS/SSL, self-encrypted HD, embedded FIPS 140 (for US only), Secure File Erase, Secure Disk Erase, NTLM v2

Integrated pull-printing solution with Celiveo, Encrypted PIN Printing, API Netgard after the Celiveo solution it's optional



## HP DesignJet T-series: High-impact Accuracy



HP DesignJet T1600 Printer Series



HP DesignJet T1700 Printer Series

914 mm (36 inch)/A0	1118 mm (44 inch)/B0+
Yes	No
Yes (through PostScript® upgrade)	Yes
180 D/h and 170 A1/h 19.3 sec/A1. Fast Mode Economode ON	26 sec/page on A1/D, 116 A1/D prints/hour
No	No
Basic multifunction printer: HP-GL/2, HP-RTL, TIFF, JPEG, CALS G4	Basic Printer: HP-GL/2, TIFF, JPEG, URF, CALS G4
Adobe PostScript 3, Adobe PDF 1.7, HP-GL/2, HP-RTL, TIFF, JPEG, CALS G4	PostScript® Printer: Adobe PostScript® 3, Adobe PDF 1.7 ext 3, HP-GL/2, TIFF, JPEG, URF, CALS G4
No	No
No	No
130- and 300-ml Original HP Ink cartridges	130- and 300-ml Original HP Ink cartridges
HP Bright Office Inks	HP Bright Office Inks
T1600dr: Two automatic front-loading roll feeds; rolls up to 91.4-m (300-ft) long T1600: One automatic front-loading roll feed; rolls up to 91.4-m (300-ft) long	T1700: One automatic roll feed; rolls up to 91.4-m (300-ft) long T1700dr: Two automatic roll feeds; rolls up to 91.4-m (300-ft) long
2 inch; 3 inch only with optional accessory	2 inch; 3 inch only with optional accessory
Yes	Yes
Integrated output stacker, up to 100 A1/D-size capacity and integrated media bin	Integrated media bin
500GB Self-Encrypted HDD with a memory of 128GB for job processing based on 4 GB of RAM	500GB Self-Encrypted HDD with a memory of 128GB for job processing based on 4 GB of RAM
Gigabit Ethernet (1000Base-T)	Ethernet, Fast Ethernet, Gigabit Ethernet, 10/100/1000Base-T Ethernet (802.3, 802.3u, 802.3ab); USB Type-A host port
Yes	Yes
Yes	Yes
Yes	Yes
Yes	Yes
No	No
Yes	Yes
Yes	Yes
No	No
Yes	Yes
HP Secure Boot, whitelisting, TPM, LDAP and Kerberos authentication, Role Based Access Control, Front Panel Access Lock, Security event logging, Disable network ports and protocols, SIEM integration, SNMPv3	HP Secure Boot, whitelisting, disable network ports and protocols, HP Signed firmware upgrade, Role Based Access Control, Front Panel Access Lock
802.1x compatibility, IPSec, TLS/SSL, self-encrypted HD, embedded FIPS 140 (for US only), Secure File Erase, Secure Disk Erase, NTLM v2	802.1x compatibility, IPSec, TLS/SSL, self-encrypted HD, SNMP v3, embedded FIPS 140 (for US only), Secure File Erase, Secure Disk Erase
Integrated pull-printing solution with Celiveo, Encrypted PIN Printing, API Netgard after the Celiveo solution it's optional	Integrated pull-printing solution with Celiveo, PIN printing

## Specifications to Help You Choose



HP DesignJet T830 Multifunction Printer



HP DesignJet T730 Printer

Printer size/paper size	610 mm (24 inch) and 914 mm (36 inch)/A1 and A0	914 mm (36 inch)/A0
Scan and copy functions	Yes	No
PostScript® version available	No	No
Print speed (line drawings)	24-in: 26 sec/page on A1, 81 A1 prints/hour / 36-in: 25 sec/page on A1, 82 A1 prints/hour	25 sec/page on A1, 82 A1 prints/hour
Scan speed	Color: up to 3.81 cm/sec (1.5 in/sec) Greyscale: up to 11.43 cm/sec (4.5 in/sec)	No
Print languages (standard)	TIFF, JPEG, CALS G4, HP-GL/2, HP-RTL, URF	HP-GL/2, HP-RTL, TIFF, JPEG, CALS G4, URF
Additional print languages PostScript® SKU/PostScript® upgrade (optional)	No	No
Scan formats (standard)	JPEG, TIFF, PDF	No
Additional scan formats PostScript® upgrade (optional)	No	No
Ink cartridges capacity	69- and 300-ml matte black ; 40-, 130-, and 300-ml yellow, magenta, and cyan Original HP Ink cartridges	69- and 300-ml matte black ; 40-, 130-, and 300-ml yellow, magenta, and cyan Original HP Ink cartridges
Number of rolls/maximum roll length	One roll feed; rolls up to 45.7-m (150-ft) long	One roll feed; rolls up to 45.7-m (150-ft) long
Compatible media core size	2 inch	2 inch
Cut sheet support	Yes	Yes
Media handling: output, capacity	Stand with output bin	Stand with output bin
Memory	1 GB	1 GB
Interfaces (standard)	Gigabit Ethernet (1000Base-T), Wi-Fi	Gigabit Ethernet (1000Base-T), Wi-Fi
PIN printing	No	No
Mobile printing	Email printing	Yes
	In-OS printing	Yes
	HP Smart App	Yes
	Remote Printing	No
Job accounting functionality	No	No
Manage print queues	No	No
HP SmartStream for HP DesignJet printers	No	No
HP DesignJet Partner Link Alert Service	No	No
Security	Device	Disable network ports Protocols
	Data	Certificates Management, TLS/SSL, 802.1x compatibility, NTLM
Security	Device	Disable network ports Protocols
	Data	Certificates Management, TLS/SSL, 802.1x compatibility



## HP DesignJet T-series: High-impact Accuracy



HP DesignJet Studio Printer Series



HP DesignJet T600 Printer Series



HP DesignJet T200 Printer Series

610 mm (24 inch)/A1 and 914 mm (36 inch)	610 mm (24 inch)/A1 and 914 mm (36 inch)	610 mm (24 inch)/A1
No	No	No
No	No	No
36-in: 25 sec/page on A1/D, 82 A1/D prints per hour* 24-in: 26 sec/page on A1/D, 81 A1/D prints per hour*	T650: 36-in: 25 sec/page on A1/D; 82 A1/D prints/hour* 24-in: 26 sec/page on A1/D; 81 A1/D prints/hour* T630: 36in: 30 sec/page on A1/D; 76 A1/D prints/hour* 24in: 30 sec/page on A1/D; 76 A1/D prints/hour*	T250: 30 sec/page on A1/D; 76 A/D1 prints/hour* T230: 35 sec/page on A1/D; 68 A/D1 prints/hour* T210: 45 sec/page on A1/D; 59 A/D1 prints/hour*
No	No	No
HP-GL/2, HP-RTL, JPEG, CALS G4, URF	HP-GL/2, HP-RTL, JPEG, CALS G4, URF	JPEG, URF
No	No	No
No	No	No
No	No	No
80-ml and 38-ml matte black; 29-ml yellow, magenta, and cyan Original HP ink cartridges	80-ml and 38-ml matte black; 29-ml yellow, magenta, and cyan Original HP ink cartridges	80-ml and 38-ml matte black; 29-ml yellow, magenta, and cyan Original HP ink cartridges
One roll feed; rolls up to 45.7-m (150-ft) long	One roll feed; rolls up to 45.7-m (150-ft) long	One roll feed; rolls up to 45.7-m (150-ft) long
2 inch	2 inch	2 inch
Yes	Yes	Yes
Stand with output bin / Integrated bin	Stand with output bin	Optional media bin
1 GB	1 GB	512 MB
Gigabit Ethernet (1000Base-T), Hi-Speed USB 2.0, Wi-Fi 802.11	Gigabit Ethernet (1000Base-T), Hi-Speed USB 2.0, Wi-Fi 802.11	Gigabit Ethernet (1000Base-T), Hi-Speed USB 2.0, Wi-Fi 802.11
No	No	No
Yes	Yes	Yes
Yes	Yes	Yes
Yes	Yes	Yes
Yes	Yes	Yes
No	No	No
No	No	No
No	No	No
No	No	No
N/A	N/A	N/A
N/A	N/A	N/A

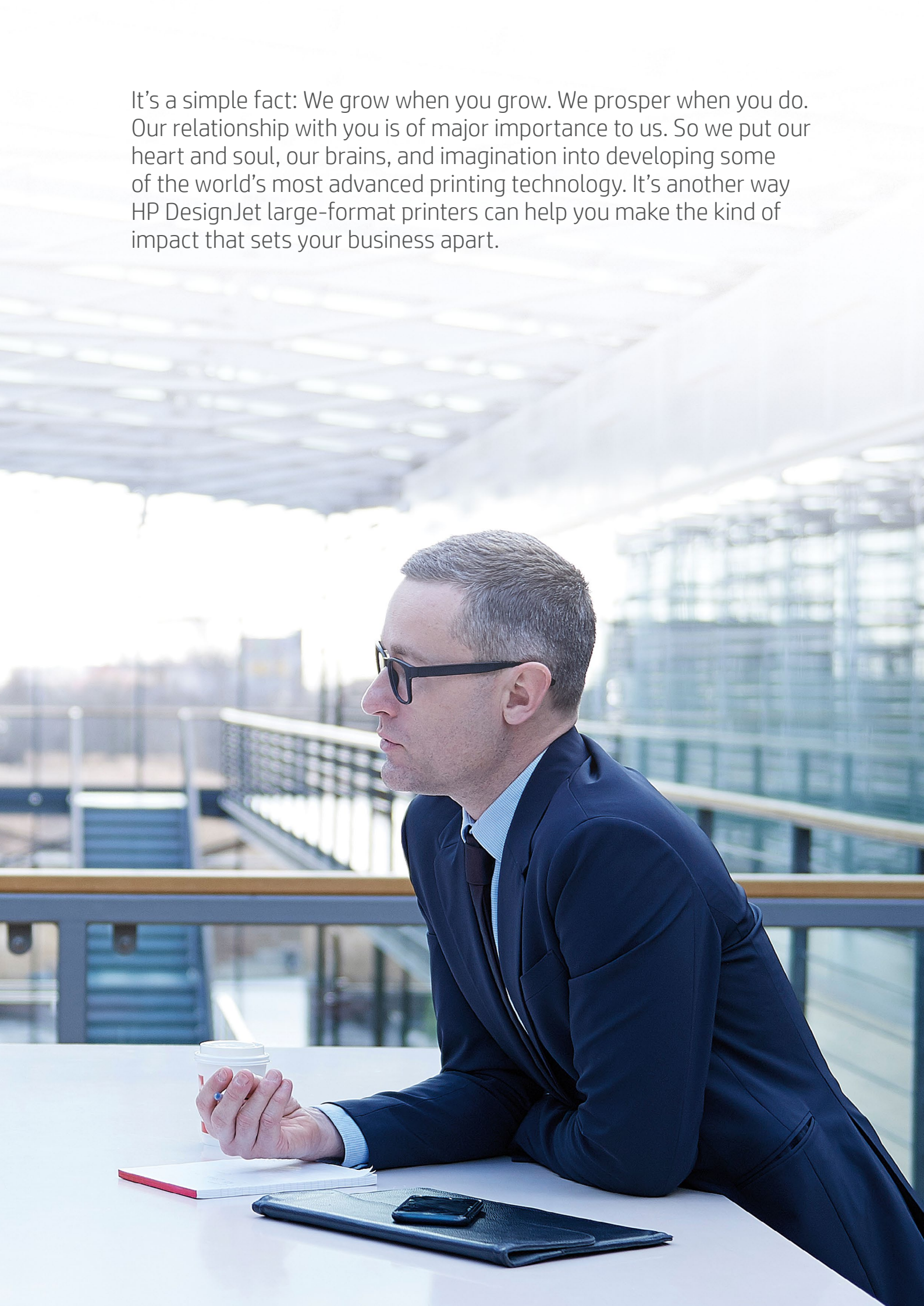
\* Mechanical printing time. Printed in Fast mode with Economode on, using HP Bright White Inkjet Paper (bond) and Original HP inks. Actual performance may vary based on a variety of conditions, including but not limited to network configuration.

# The Impact of Advanced Technology





It's a simple fact: We grow when you grow. We prosper when you do. Our relationship with you is of major importance to us. So we put our heart and soul, our brains, and imagination into developing some of the world's most advanced printing technology. It's another way HP DesignJet large-format printers can help you make the kind of impact that sets your business apart.





### High-definition Nozzle Architecture (HDNA) and HP Dual Drop Technology

Provides twice the nozzle density of previous HP DesignJet Z-series printheads. Using dual drop technology, high-definition HP printheads produce a combination of large drop sizes (7 pL) for robust area fills at fast speeds, while small drop sizes (3 pL) reduce visible grain—eliminating the need for light-colored inks.



### Adobe PostScript®

Enables you to print any document—text, graphics, images, and color—from any computing platform to any supported device, at the highest quality possible. Delivers optimized quality for PANTONE® color emulation, and eliminates errors, printing complex PDFs with different layers.



### Adobe PDF Print Engine®

This high-speed, high-fidelity print platform renders PDF job content, converting graphics, text, and images to rasters for driving HP DesignJet large-format printers. It provides tile parallel processing, extended spot color handling, and the smoothest shades ever.



### HP Pixel Control

This breakthrough moves from building color output, ink layer by ink layer, to directly choosing color at the pixel level. This results in smoother transitions, richer and deeper colors, accurate spot colors, and sharper details.



### HP Embedded Spectrophotometer®

Integrated with some HP DesignJet printers, this precision instrument provides a high degree of color accuracy and color consistency from the first print to the last one—and from printer to printer—regardless of paper types.



### Integrated Vertical Trimmer

The industry's first integrated vertical trimmer, this inline finishing option lets you cut post-processing labor time by up to 20%.<sup>10</sup>



### HP Professional PANTONE® Emulation

Matches colors as closely as possible to the original PANTONE® colors by taking into account your printer and paper type. Designed to produce emulations similar to those set up manually by prepress professionals.



### HP Double Swath Technology

Unique to HP, this advanced technology provides breakthrough speed and performance thanks to two sets of printheads, creating a wide print swath and high firing frequency.



### HP Optical Media Advance Sensor (OMAS)

Enables you to print at top speeds and still get outstanding results. This breakthrough technology improves paper-advance control and accuracy, so the printer can print at higher speeds across multiple environmental conditions without impairing image quality.



### Designed with the Environment in Mind

Most HP DesignJet large-format printers are Energy STAR® certified, which means they meet strict energy efficiency guidelines without sacrificing performance. Most are also EPEAT® registered,<sup>11</sup> which means they have a reduced environmental impact across their lifecycle. Learn more at [hp.com/sustainability](https://hp.com/sustainability)



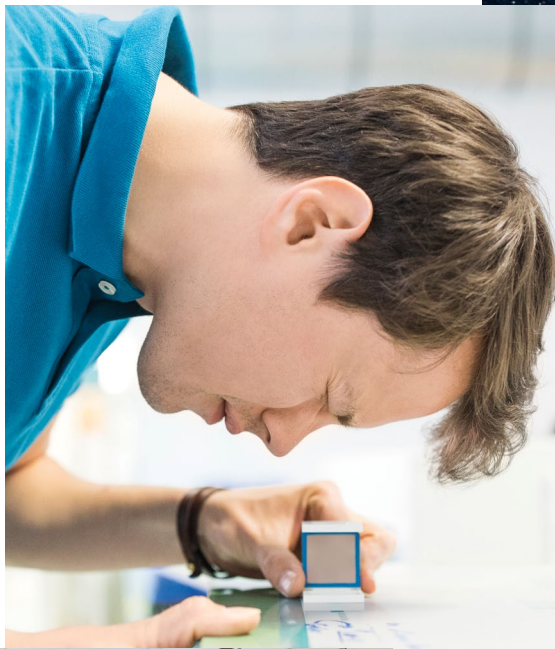


# Defend your network with the world's most secure large-format printers<sup>12</sup>

Although many IT departments rigorously apply security measures to individual computers, printing and imaging devices are often overlooked, exposing the entire network to a cybersecurity attack. Help protect your network along with your devices, data, and documents with security solutions from HP.



# Making an Impact on Growth



## You have big goals and dreams for your business

HP DesignJet large-format printers are uniquely able to help you achieve them. These remarkable devices represent a major leap forward in large-format printers and include some of the world's most sophisticated printer technology and features.

HP DesignJet printers will help you operate more efficiently, increase productivity, and reduce costs—all while meeting the highest standards of print quality. In short, they'll help elevate your business to new heights of prosperity. No wonder businesses eager to grow are selecting HP DesignJet.

There's more to learn about these powerful printers—much more.

For details, visit [hp.com/go/designjet](http://hp.com/go/designjet)



<sup>1</sup> Based on 36-inch Wi-Fi integrated MFPs available in the market as of September, 2015.

<sup>2</sup> Applicable to the HP DesignJet XL 3600 Multifunction Printer series. Advanced embedded security features are based on HP review of 2019 published embedded security features of competitive printers, as of February 2019.

<sup>3</sup> Requires an HP Applications Center account, Internet connection, and connected Internet-capable device. For more information, see [hpapplicationscenter.com](http://hpapplicationscenter.com).

<sup>4</sup> Once image is selected, one-click printing when printing the entire file without any modifications to the print settings. Applicable to PDF, JPEG, TIFF, DWF, and HP-GL/2 files.

<sup>5</sup> Using HP SmartStream software, job preparation and processing can be completed in 50% of the time. Conclusion based on an HP internal test, March 2015 comparing select competitor printers and software to HP SmartStream software with the HP DesignJet T7100 Printer and HP PageWide XL printers, measuring the time required to extract pages from a 50-page document and print them using several printers compared with using equivalent software programs.

<sup>6</sup> Compared with large-format photo inks inkjet printers under \$25,000 USD for graphics applications. Based on the fastest-rated color speeds as published by manufacturers as of June, 2017. Test methods vary.

<sup>7</sup> Compared with large-format inkjet printers under \$25,000 USD for graphics applications. Based on the fastest-rated color speeds as published by manufacturers as of June, 2017. Test methods vary.

<sup>8</sup> May require purchase of PostScript® models or optional HP DesignJet PostScript®/PDF Upgrade Kit.

<sup>9</sup> Embedded in some HP DesignJet printers is an i1 spectrophotometer from X-Rite. Close collaboration between HP and X-Rite ensures a reliable solution that's been thoroughly tested to meet customer demands for ease, quality, and dependability.

<sup>10</sup> Vertical trimmer and dual rolls included with the HP DesignJet Z9"dr 44-in PostScript® Printer with V-Trimmer only. Up to 20% reduction in post-processing labor time based on internal HP testing compared to HP DesignJet Z9"dr series printers without built-in vertical trimmer.

<sup>11</sup> EPEAT® registered where applicable. EPEAT registration varies by country. See [epeat.net](http://epeat.net) for registration status by country.

<sup>12</sup> Applicable to the HP DesignJet T1700 Printer series, HP DesignJet Z9" PostScript® Printer series, and HP DesignJet Z6 PostScript® Printer series, HP DesignJet XL 3600 Multifunction Printer series, HP DesignJet T2600 Multifunction Printer series, and HP DesignJet T1600 Printer series. Advanced embedded security features are based on HP review of 2019 published embedded security features of competitive printers, as of February 2019.



Brochure | HP DesignJet

Adobe and Adobe PostScript 3 are trademarks of Adobe Systems Incorporated.  
ENERGY STAR and the ENERGY STAR mark are registered trademarks owned by the U.S. Environmental Protection Agency.  
PANTONE is the property of Pantone, Inc.

© Copyright 2017, 2020 HP Development Company, L.P. The information contained herein is subject to change without notice. The only warranties for HP products and services are set forth in the express warranty statements accompanying such products and services. Nothing herein should be construed as constituting an additional warranty. HP shall not be liable for technical or editorial errors or omissions contained herein.

4AA4-5696ENE, July2020, Rev. 4